

COVID-19 and INFLUENZA

SURVEILLANCE REPORT: January 17-23, 2021



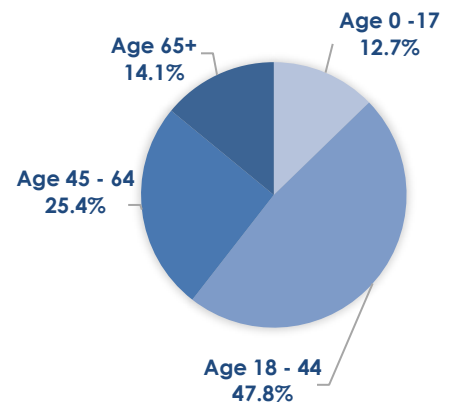
Overview

- Case rates and testing positivity have started to come down with this week reporting 56% of last week's case numbers.
- The Regional Stay at Home Order for Stanislaus County and the San Joaquin Region has been lifted and Stanislaus is in **Tier 4 (Purple): Widespread**.
- There were no new cases of influenza confirmed in Stanislaus County this week.

COVID-19 MONITORING

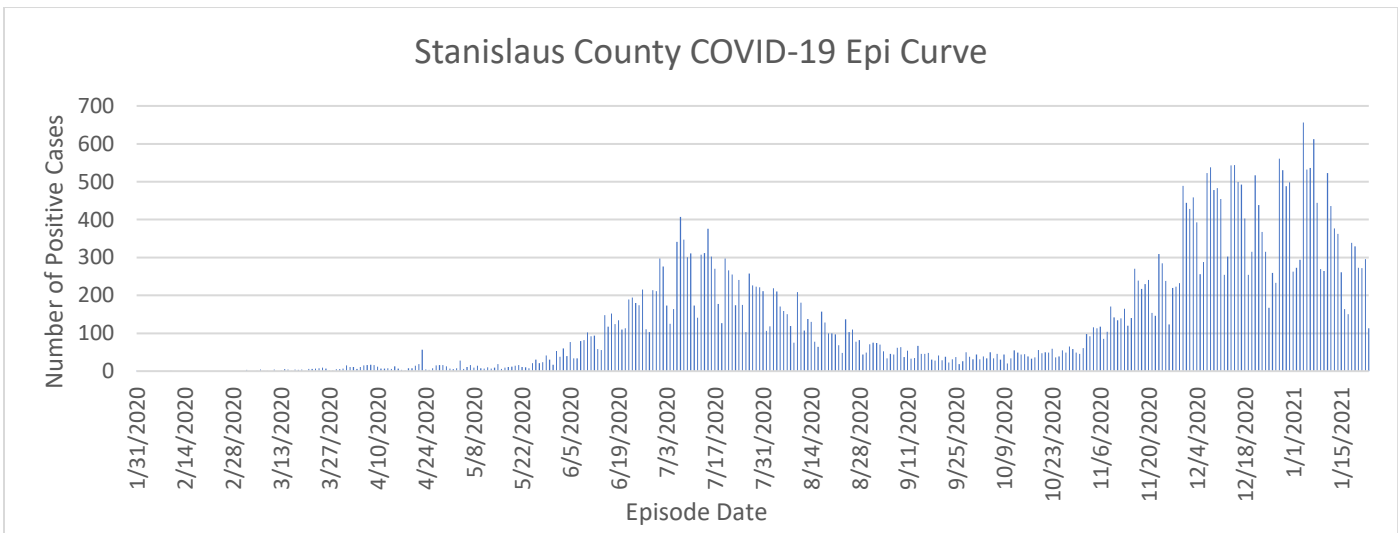
New Positive Cases	Report Week			Total		
	Count	%	Rate*	Count	%	Rate*
Age 0-17	241	12.7%	1.61	4,804	11.0%	32.17
Age 18-44	904	47.8%	4.32	21,941	50.2%	104.75
Age 45-64	481	25.4%	3.72	11,781	27.0%	91.23
Age 65+	266	14.1%	3.58	5,171	11.8%	69.53
TOTAL	1,892	-	-	43,697	-	-
Total Tests Reported	20,604			434,351		
Deaths	51	-	-	788	-	-

REPORT WEEK CASE % BY AGE GROUP



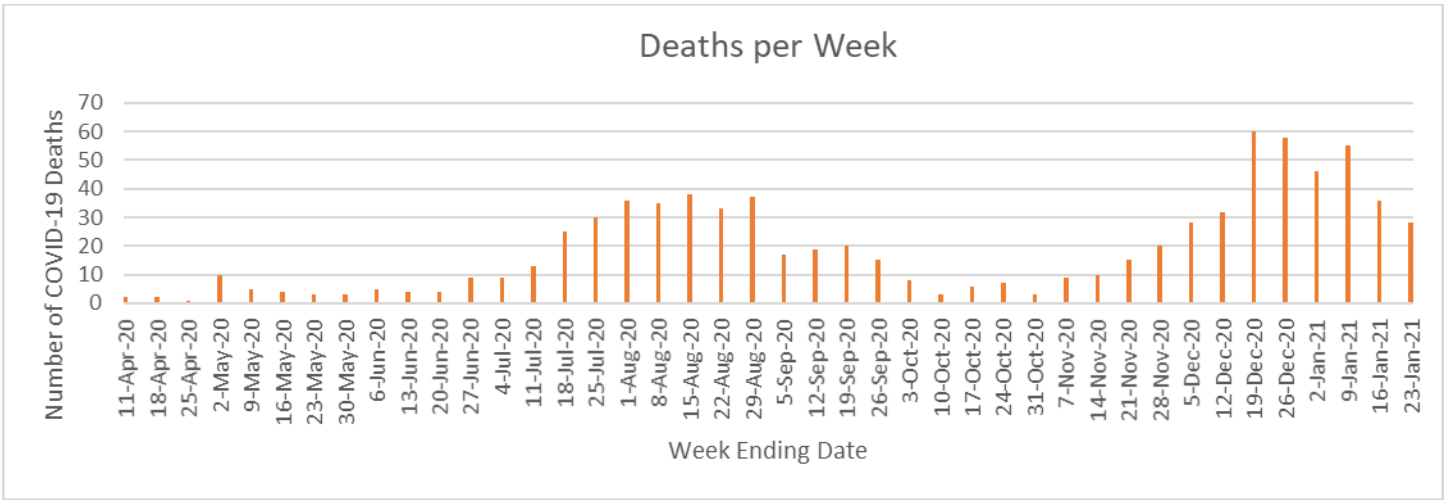
*Rate per 1,000 population; Data Source: California Department of Finance

This graph shows the daily number of unique COVID-19 confirmed positive cases reported among Stanislaus County residents by the case's episode date. The episode date is the earliest date a person is known to have the virus and is determined using a few variables including symptom onset date and the date they were tested.



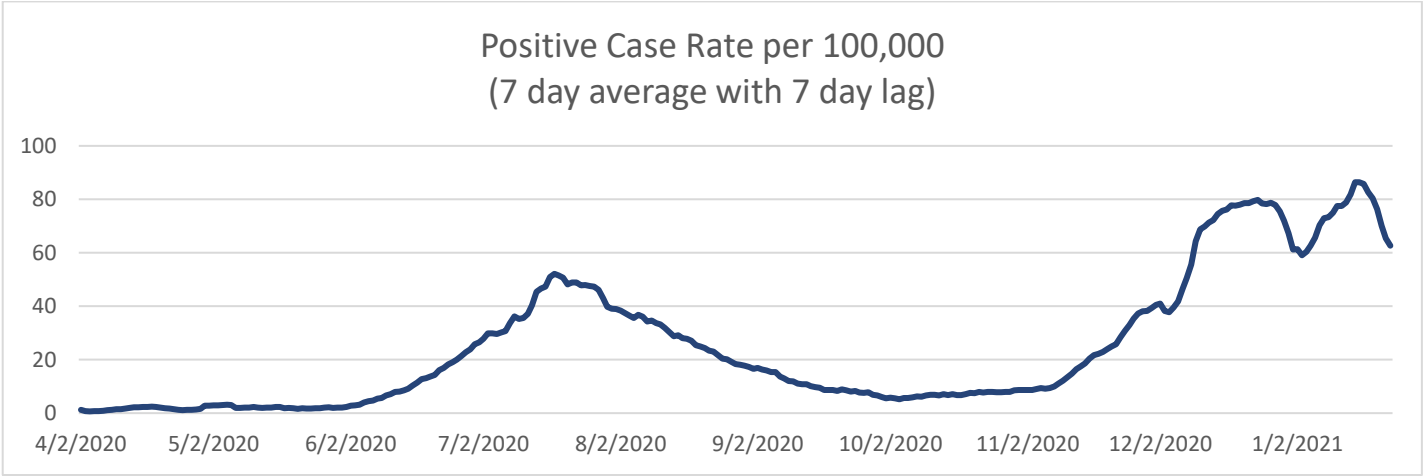
Note: Due to delays in specimen processing, totals for the past two weeks may be incomplete.

Reported COVID-19 cases and deaths on this page are those that have been confirmed by Stanislaus County Public Health.

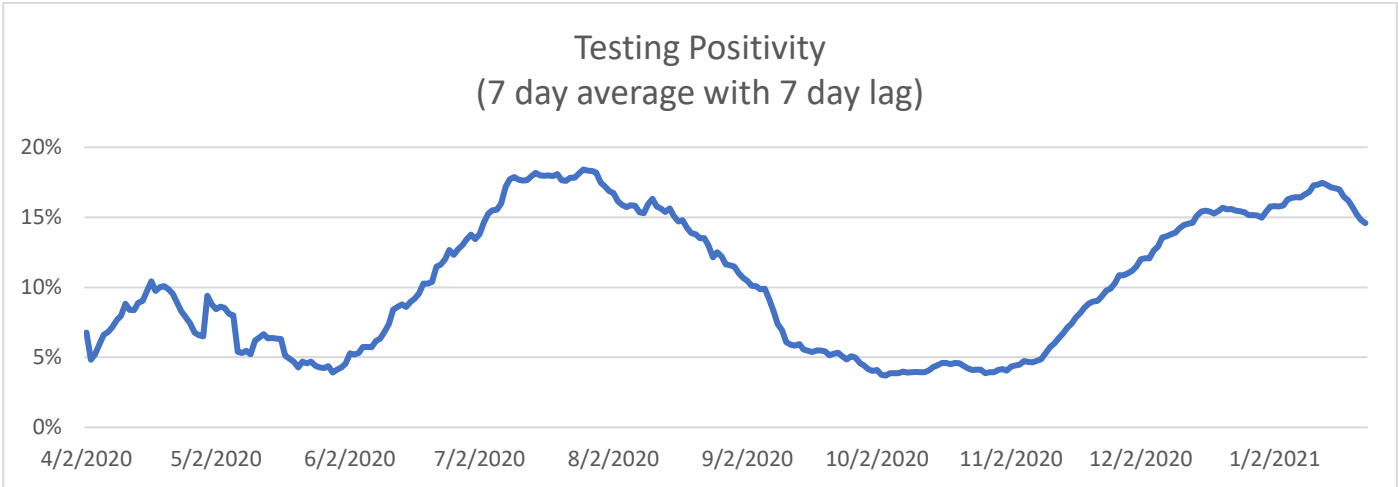


Note: Due to delays in death reporting and assessment, totals for the past two weeks may be incomplete.
 Reported COVID-19 cases and deaths on this page are those that have been confirmed by Stanislaus County Public Health.

The graph below shows positive case rate (number of positive cases per 100,000 county population), 7-day average with 7 day lag, through the report week. This does not include the state adjustments and may vary from state measures.



The graph below shows testing positivity (percent of tests that are positive), 7-day average with 7 day lag, through the report week. This may vary from state measures.



COUNTY RISK LEVEL

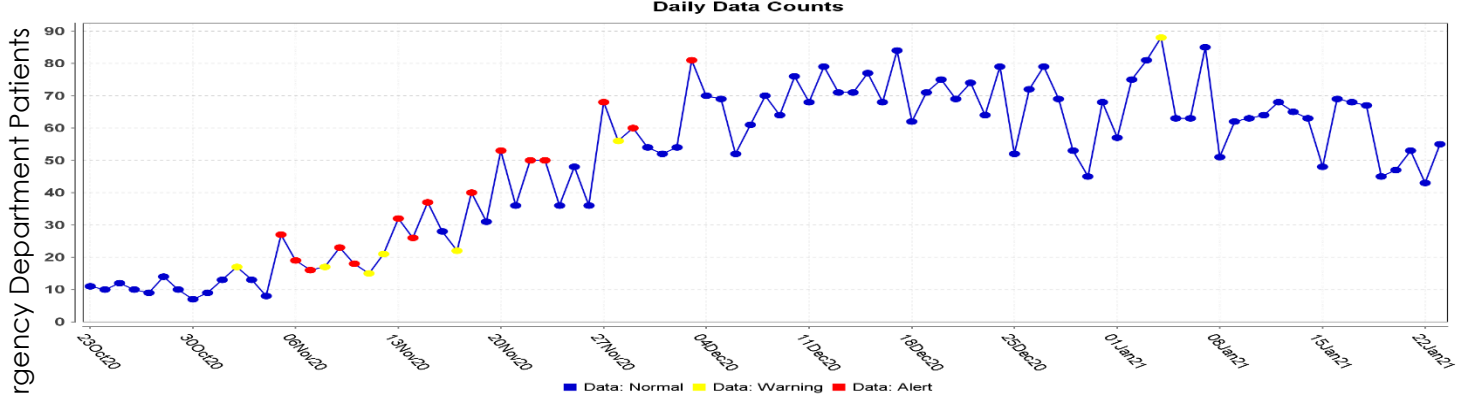
The State of California changed county monitoring strategies as of August 30, 2020. Below are the standard categories as well as the current ratings for Stanislaus County.

Measure (7 day lag)	Stanislaus (as of 1/18/21 for week ending 1/9/21)	Higher Risk —————> Lower Risk Of Community Disease Transmission			
		Widespread Tier 1	Substantial Tier 2	Moderate Tier 3	Minimal Tier 4
Adjusted Case Rate for Tier Assignment* (Rate per 100,000)	53.8	>7	4-7	1-3.9	<1
Testing Positivity	14.2%	>8%	5-8%	2-4.9%	<2%

*Adjusted case rate will be determined using confirmed (by PCR) cases, includes an adjustment factor for counties that are testing below the state average.

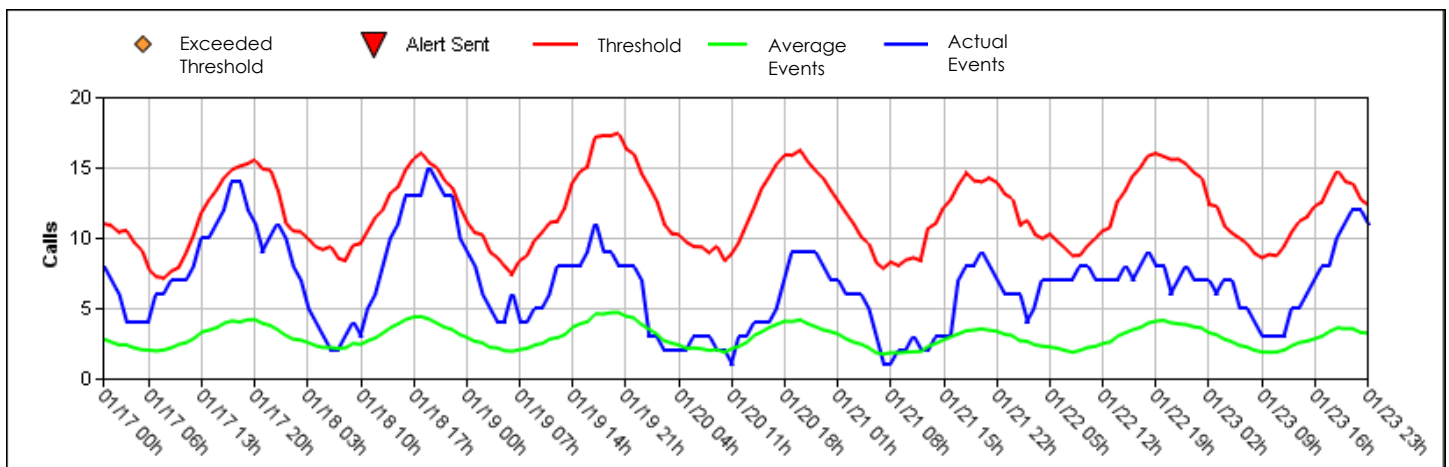
COMMUNITY MONITORING – EMERGENCY CASES COVID-19 LIKE ILLNESS

This graph shows the number of emergency room visits for COVID-19-like illness for all Stanislaus County Hospitals.



Mountain Valley EMS COVID-19 Responses

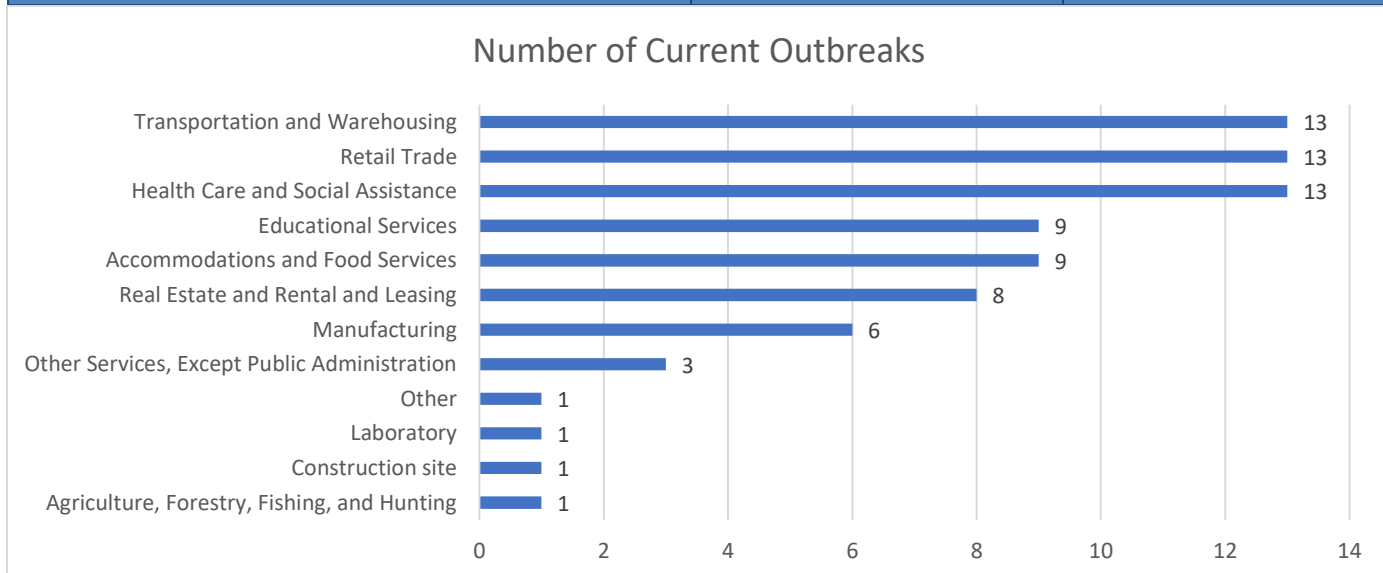
This graph shows the ambulance calls (blue) for COVID-19 related situations compared to the threshold of concern (red).



COVID-19 OUTBREAKS

Current Outbreaks:

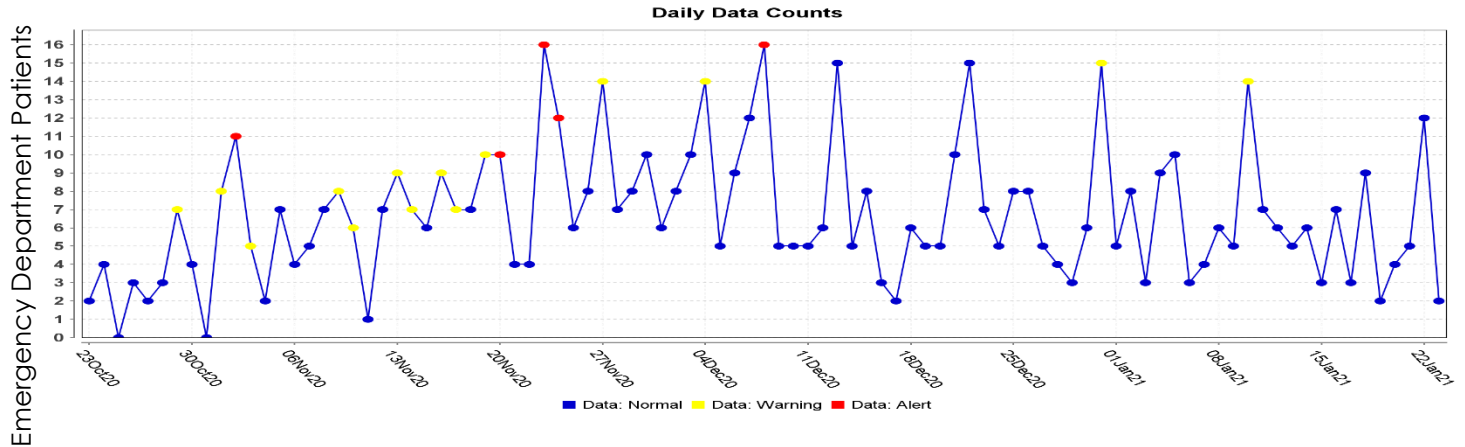
	Number of Outbreaks	Number of Cases
Healthcare and Social Assistance	13	196
Retail Trade	13	66
Transportation and Warehousing	13	168
Accommodations and Food Services	9	90
Educational Services	9	95
Real Estate and Rental and Leasing	8	212
Manufacturing	6	83
Other Services, Except Public Administration	3	16
Agriculture, Forestry, Fishing and Hunting	1	16
Construction Site	1	3
Laboratory	1	-
Other	1	-
TOTAL	78	825



INFLUENZA MONITORING

INFLUENZA LIKE ILLNESS

This graph shows the number of emergency room visits for Influenza-like illness complaints for all Stanislaus County Hospitals.



SEVERE INFLUENZA

This chart shows the number of people who are in the intensive care unit and deaths for children under 18 from influenza.

	Report Week	This Influenza Year (since September 27, 2020)
Intensive Care Unit (under 18)	0	0
Death (under 18)	0	0

TYPES OF INFLUENZA-LIKE ILLNESS

This chart looks at how many samples were tested for different kinds of influenza-like illness in San Joaquin and Stanislaus* during the report week, and how many were positive, in order to monitor what is currently spreading in the area.

	Report Week		This Influenza Year (since September 27, 2020)	
	Samples Tested	Positive Tests	Samples Tested	Positive Tests
Influenza A	872	0	11,427	3
Influenza B	872	0	11,427	2
RSV	155	0	2,361	2
Parainfluenza**	0	0	12	0
Adenovirus**	0	0	12	0
Rhinovirus/Enterovirus**	0	0	12	3
Human Metapneumovirus**	0	0	12	0

*Includes Influenza (A and B) and RSV testing information from four Stanislaus County Hospitals and the San Joaquin Public Health Lab.

**Only includes lab tests from San Joaquin Public Health Laboratory.