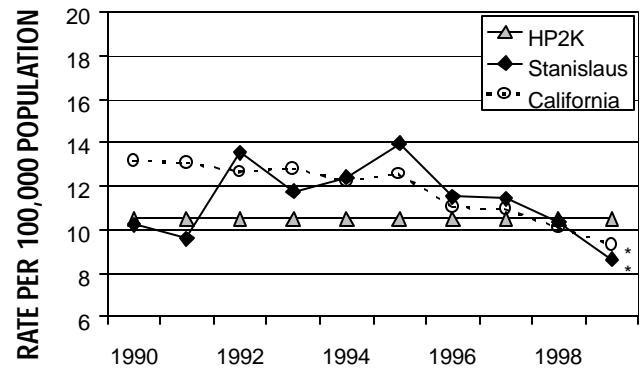


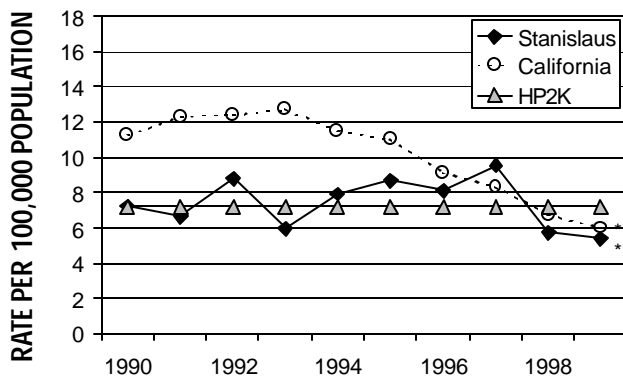
Suicide

Both Stanislaus County and California have met and surpassed the national goal for the year 2000 for Suicide deaths per year. Stanislaus County has mirrored the trends in California fairly closely over the past decade.

AGE ADJ. RATE OF DEATH DUE TO SUICIDE,
CA AND STANISLAUS CO, 1990-1999



AGE ADJ. RATE OF DEATH DUE TO HOMICIDE,
CA AND STANISLAUS CO, 1990-1999



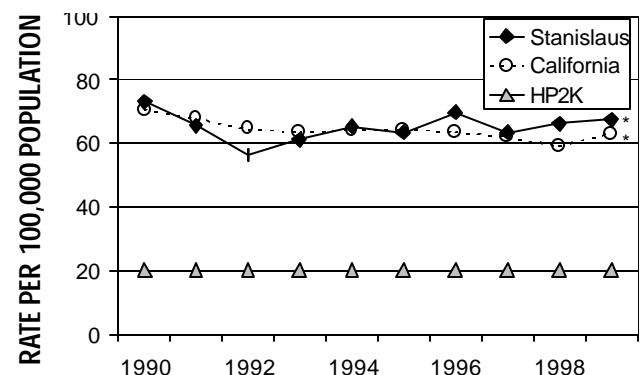
Homicide

Stanislaus County has hovered near the national goal for death due to homicides over the last decade while California has just recently reached the lower mortality rate.

Stroke

After Heart Disease and All Cancers, Stroke is the most common cause of death in Stanislaus County. There were 255 deaths to this cause in 1999 with no sign of a decline. California and Stanislaus County are both much higher than the national goal for 2000. In fact, they are almost 3 times higher than the goal.

AGE ADJ. RATE OF DEATH DUE TO STROKE,
CA AND STANISLAUS CO, 1990-1999



Notable results

As a result of last year's report, four (4) critical health issues were identified. These were Chlamydia, Low Birth Weight babies, Unintentional Injuries, and Cardiovascular Disease. HSA takes an active role in the implementation of a community health improvement process to address each of these issues.

Improving the community's health

The following are specific strategies that the Health Services Agency has incorporated over the past year in response to the four (4) critical health issues.

Chlamydia

The rate of chlamydia has declined slightly in the past 6 years, but this infection is still the most commonly reported disease in the county as well as the state. The rate of infection is highest in the 15-24 year old age groups with rates above 2,000 per 100,000 population.

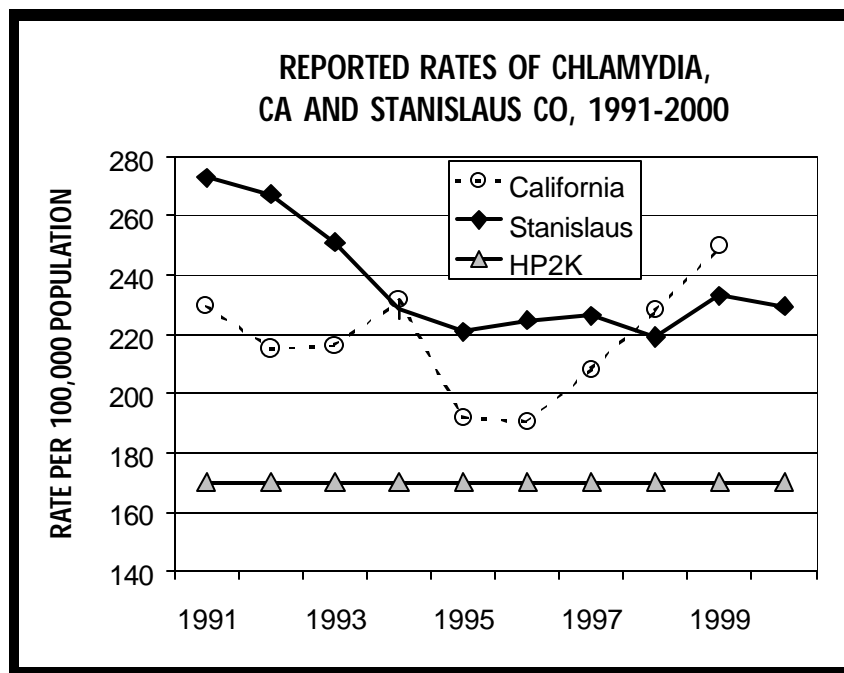
Reported cases of chlamydia are highest among the African American and Hispanic populations, but some of these differences could be due to selective reporting. Much work is needed, both in Stanislaus County and California as a whole, in order to begin to approach the national objective of 170 cases per 100,000 population.

In recognizing that Chlamydia has become an increasing concern in Stanislaus County, Health Services Agency/Public Health wrote and was awarded the Chlamydia Grant. Over the last year this has allowed the Agency to hire a Health Educator and begin conducting the following:

- Assessment of the availability, capacity and need for conducting chlamydia screens
- Implementation of the Get Tested Chlamydia Screening Program
- Provision of education, counseling and testing at: Juvenile Hall, Public Safety Center and selected alternative schools.
- Provision of outreach activities utilizing the Momobile and the Sexually Transmitted Disease Van
- Establishment of an advisory committee

which includes youth, members of the community, Sutter Gould Medical Group and Blue Cross

- Development of a chlamydia fact card which was distributed throughout the community
- Formation of a partnership with the community collaborative's Teen Life Challenge Program, the Stanislaus County Office of



Education, and California Forensic Medical Group, to address chlamydia as a growing problem in Stanislaus County.

Additional strategies are in the process of being developed.

Low Birth Weight

Low birth weight percentage has declined for three years, but that decline has been insignificant. In response to the problem impacting infants in Stanislaus County, the Perinatal Outreach Education staff has engaged in the following:

- Continued partnership efforts in the Perinatal Outreach and Education Plan-

ning Task Force.

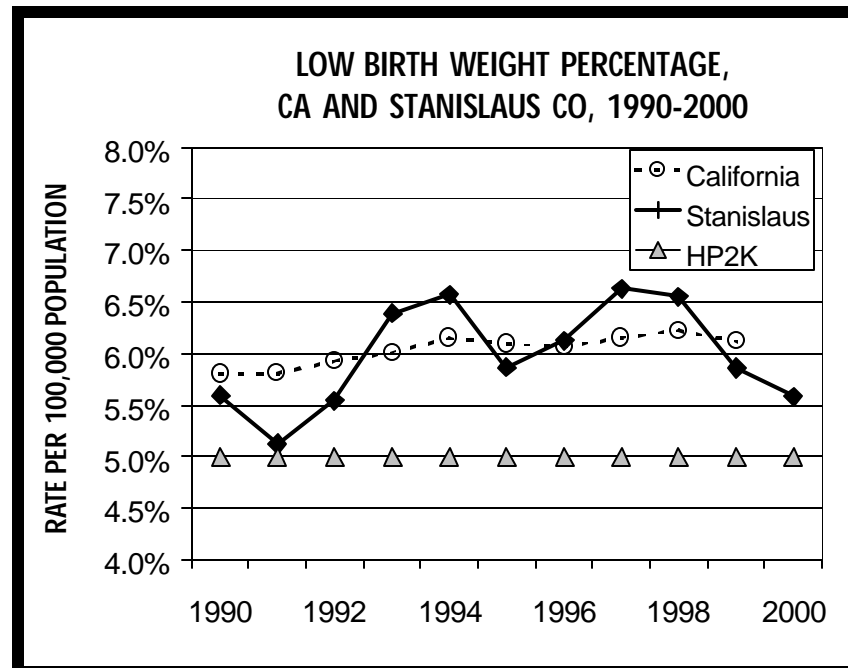
Representatives from Doctors Medical Center, Memorial Hospitals Association, Emanuel Medical Center and Oak Valley Hospital help comprise the make up of the Task Force. Other members include the epidemiologist, Maternal Child Health Director, Perinatal Outreach Education staff, health educators,

Women, Infants, and Children (WIC) Program staff, nursing directors from area hospitals, the Medi-Cal Program staff, and hospital social workers.

- Identified specific areas of the county with high Low Birth Weight rates.
- Developed an Outreach Team of Community Health Workers with language skills to address the diverse populations.
- Developed an Educational Calendar with information for pregnant women/teens. These calendars have been distributed through various outreach methods such as door to door, at flea markets, etc.
- Extended the education and outreach activities to include males to assist in encouraging the understanding of the need for

early prenatal care and fetal development.

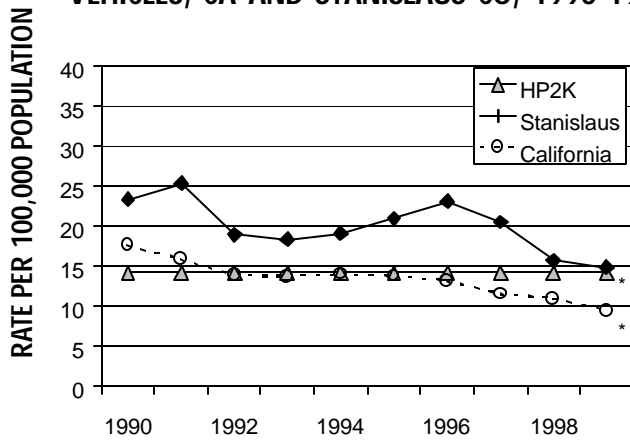
- Continued monitoring through birth certificate data, focus groups and post discharge interviews.



Injury Prevention

As indicated in the graph below, the rate of unintentional deaths, the largest fraction of which includes motor vehicle deaths, is higher in Stanislaus County when compared with the State's rate. We have applied for and have been awarded a grant for a Safe

AGE ADJ. RATE OF DEATH DUE TO MOTOR VEHICLES, CA AND STANISLAUS CO, 1990-1999



Communities Project, to focus on vehicle injury prevention. The objectives of this planning grant are to:

- Establish a community wide coalition
- Review and compile vehicle injury data
- Create a community profile on vehicle injuries, to include demographics, data, and resources
- Develop a strategic plan on vehicle injury prevention
- Seek further funding for implementation of prevention strategies

Cardiovascular Disease (CVD) Prevention

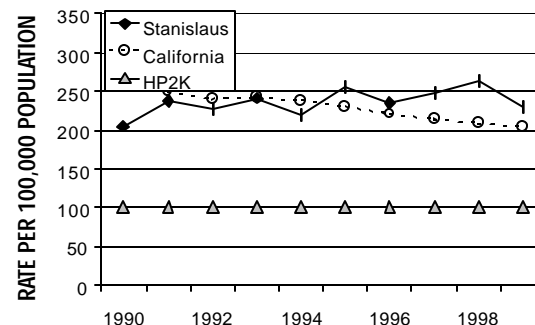
In response to the recent statistics that have shown that Stanislaus County has a high hospitalization rate due to heart disease and stroke, the Health Services Agency established a CVD prevention coalition in early 1999. The HEART (heart education awareness resource team) Coalition is starting its third year of existence. Accomplishments include:

- Established a 3-year (2000 – 2002) work plan, which is being implemented.
- Developed a CVD prevention resource guide. This guide was distributed to various health care providers and facilities, as well as schools and other organizations within the County.
- Coordinated with the County's Risk Management Division in the development of a Public Access Defibrillator Program.
- Conducted a Heart Info Fair to educate the community on risk prevention.
- In the process of developing a website on CVD prevention.

The Coalition is committed to continue to gather and analyze CVD health risk and

behavioral data, as well as develop community education programs to reduce cardiovascular diseases in the community.

AGE ADJ. RATE OF DEATH DUE TO CORONARY HEART DISEASE, CA AND STANISLAUS CO, 1990-1999



Emerging Health Issues

On examining the health indicator data, two (2) emerging health issues have been discovered in Stanislaus County. They are Hepatitis C infection and Black Infant Health. Once specific areas of focus are identified, strategic planning efforts will begin to start addressing these issues.

Hepatitis C

The number of individuals becoming infected with the Hepatitis C virus is not necessarily increasing, but the number being newly diagnosed is increasing. This is an epidemic of awareness more than a real epidemic of infection. This increase can be attributed to the following:

- There is more awareness due to education, media coverage etc.
- There is more awareness among providers who now test pre-operation and High Risk individuals.
- A large group of people having used IV drugs perhaps in the 70's, are now becoming symptomatic, are seeking medical care and finding that they have Hepatitis C.

