

COVID-19 RESPONSE

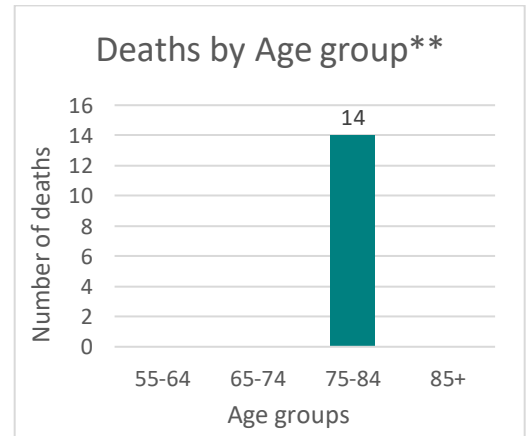
SURVEILLANCE REPORT: July 17 – July 30, 2022

Overview

- Cases and Percentage of positive tests have been stable
- COVID- 19 related Emergency Department have decreased
- Wastewater data shows Modesto's and Turlock's average SARS-CoV-2 have increased from last week.

COVID-19 MONITORING

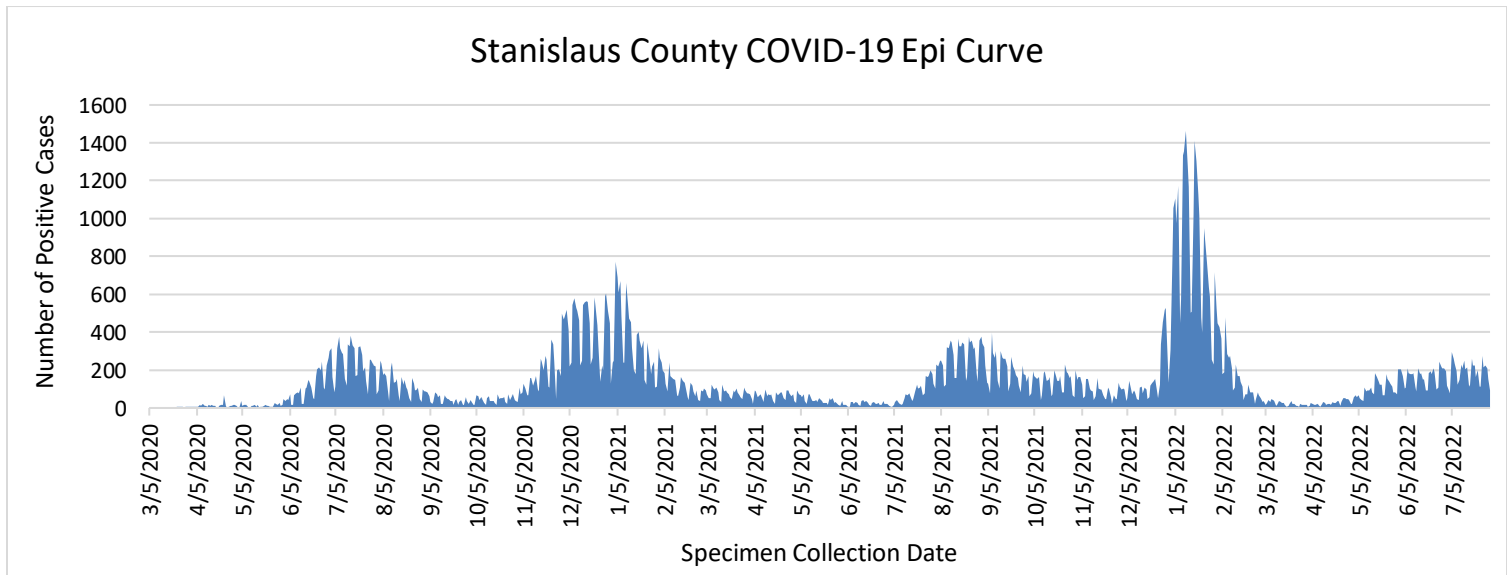
Age	Report Weeks			Total		
	Count	%	Rate	Count	%	Rate*
0-17	437	16.1%	2.93	22,585	17.1%	151.24
18-44	1,186	43.7%	5.66	63,009	47.6%	300.82
45-64	674	24.8%	5.22	32,497	24.6%	251.65
65+	416	15.3%	5.59	14,142	10.7%	190.15
Total	2,717	-	-	132,271	-	-
Deaths	11	-	-	1,810	-	-



*Rate per 1,000 population; Data Source: California Department of Finance

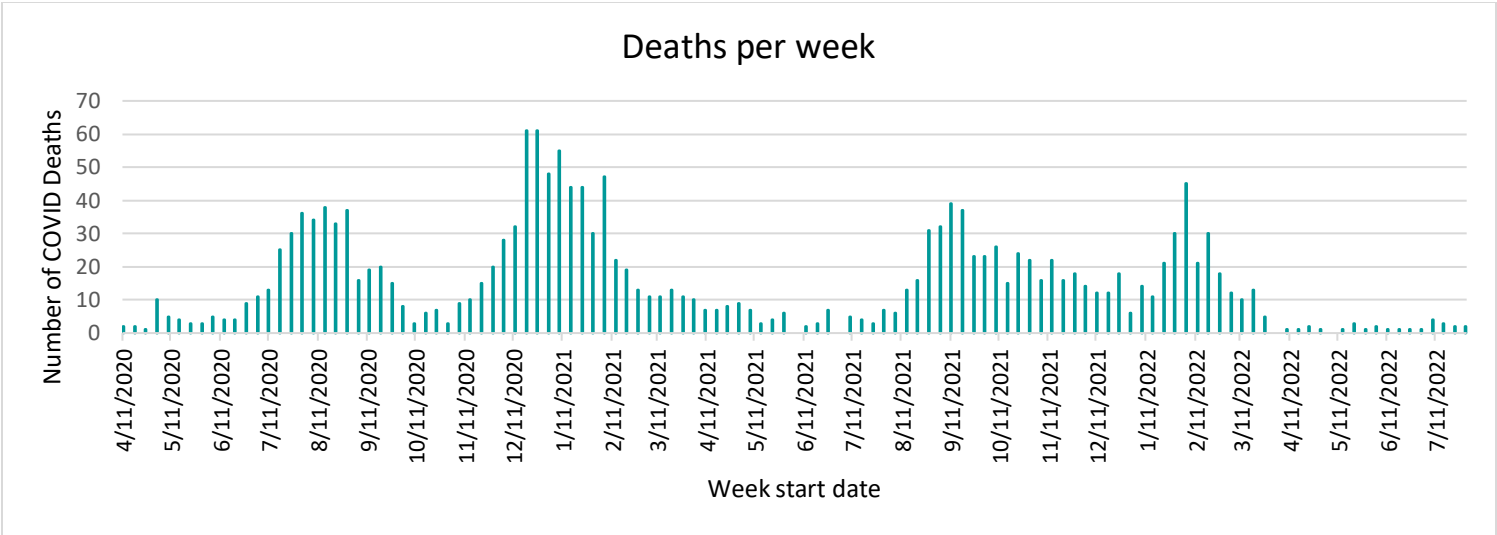
** Total of 36 Deaths from April 1, 2022, through July 30, 2022, Age groups with less than 10 deaths are not displayed.

This graph shows the daily number of COVID-19 confirmed cases reported among Stanislaus County residents by episode date.



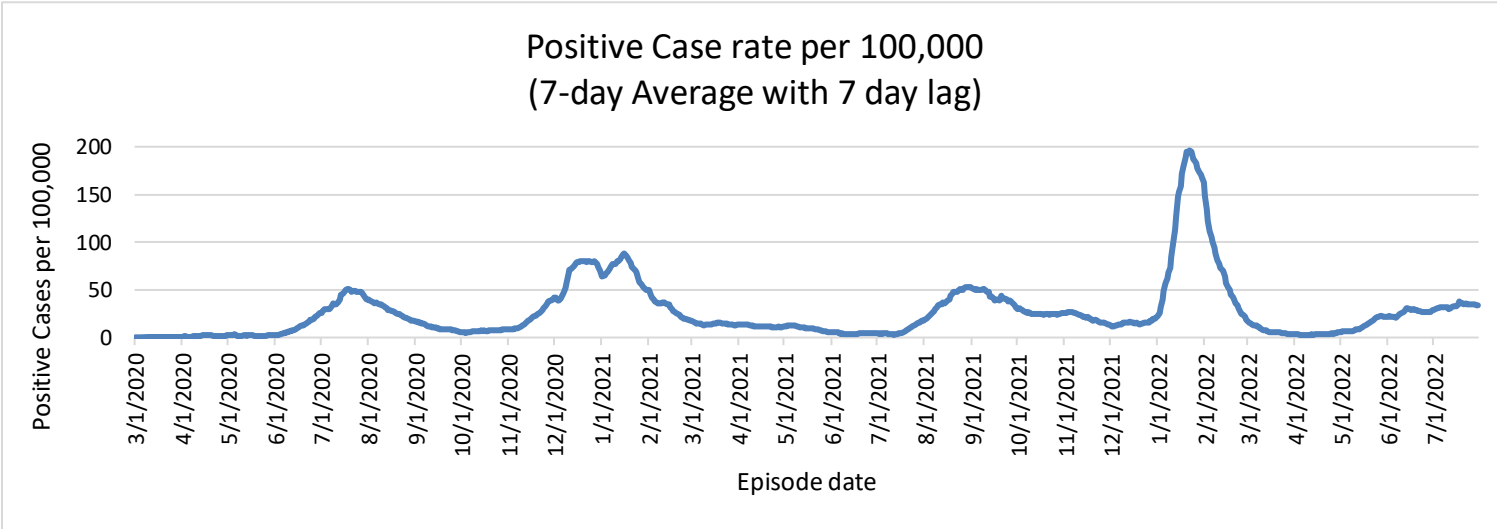
Note: Due to delays in specimen processing, totals for the past two weeks may be incomplete.

Reported COVID-19 cases and deaths on this page are those that have been confirmed by Stanislaus County Public Health.

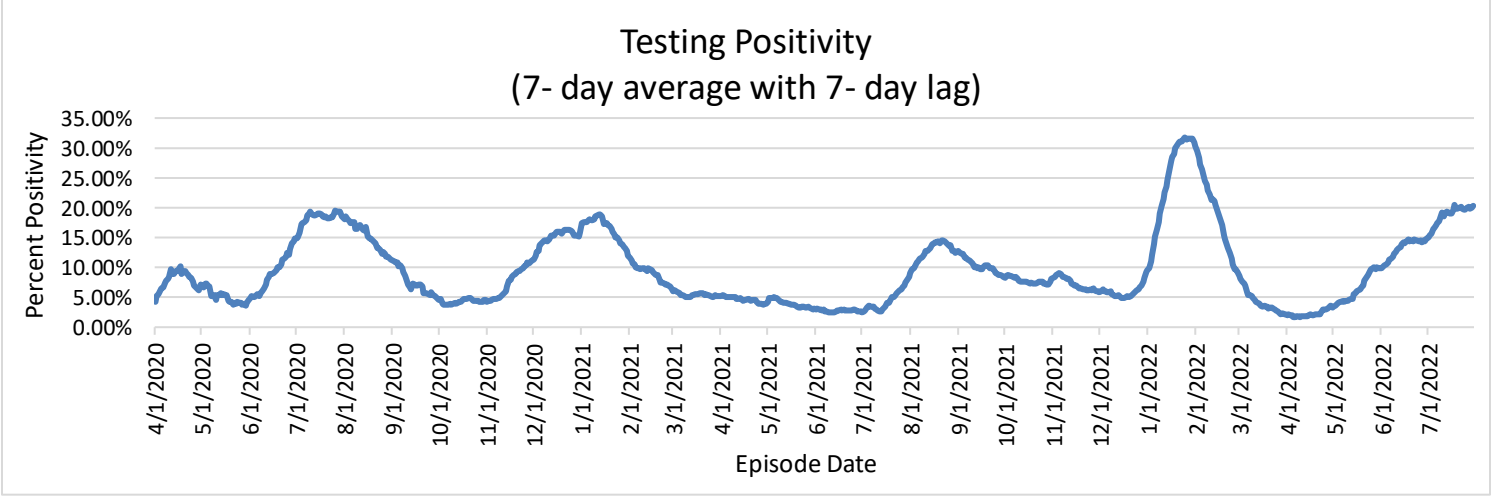


Note: Due to delays in death reporting and assessment, totals for the past two weeks may be incomplete. Reported COVID-19 cases and deaths on this page are those that have been confirmed by Stanislaus County Public Health.

The graph below shows positive case rate (number of positive cases per 100,000 county population), 7-day average with 7-day lag, through the report week. This does not include the state adjustments and may vary from state measures.



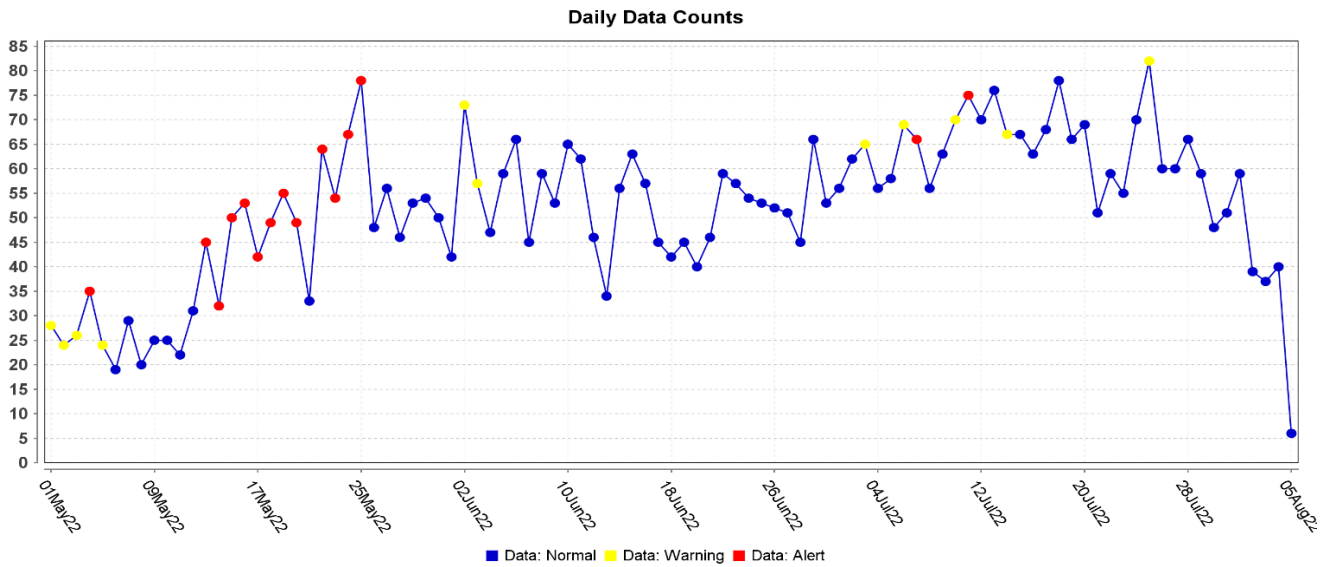
The graph below shows testing positivity (percent of tests that are positive), 7-day average with 7-day lag, through the report week. This may vary from state measures.



COMMUNITY MONITORING – EMERGENCY CASES

COVID-19 LIKE ILLNESS

This graph shows the number of emergency room visits for COVID-19-like illness for all Stanislaus County Hospitals.



COVID-19 OUTBREAKS BY INDUSTRY

Current Outbreaks as of August 05, 2022:

Industry	Number of Open Outbreaks	Open Outbreaks Newly Reported in last 2 weeks
Agricultural operations	2	0
Auto Services	1	0
Bank/Financial services	1	0
Community center	1	0
Daycare/Preschool	4	0
Distribution Warehouse	3	0
First responder station	1	0
Food processing/manufacturing	8	3
Food service/restaurant	1	0
Health Care and Social Assistance	4	1
Homeless shelters	1	0
Office space	6	1
Public Transit	1	0
Residential Facility	1	0
Retail Space	16	3
School	1	0
SNF/Residential Care Facility **	16	2
Total	68	10

Note: Stanislaus County defines an outbreak as ≥ 3 cases of confirmed COVID-19 with epi-linkage

** Reported weekly

Last Updated on August 05, 2022

Unrestricted

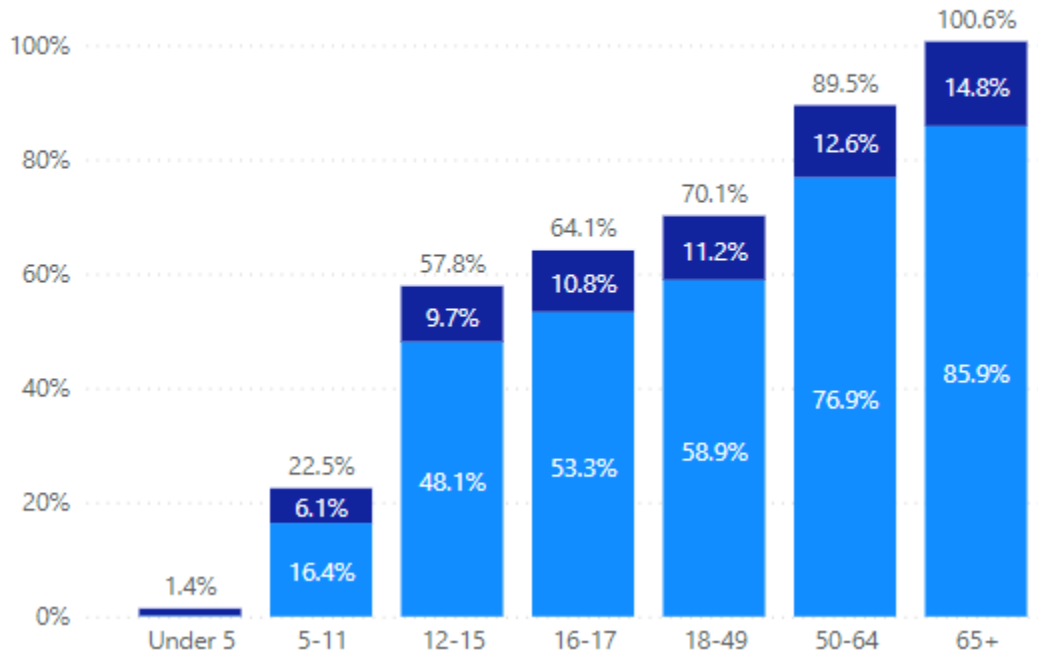
Page **3** of **5**

The items contained are only the information known at the time of the entry and are subject to change at any time under any circumstance.

Vaccine Coverage

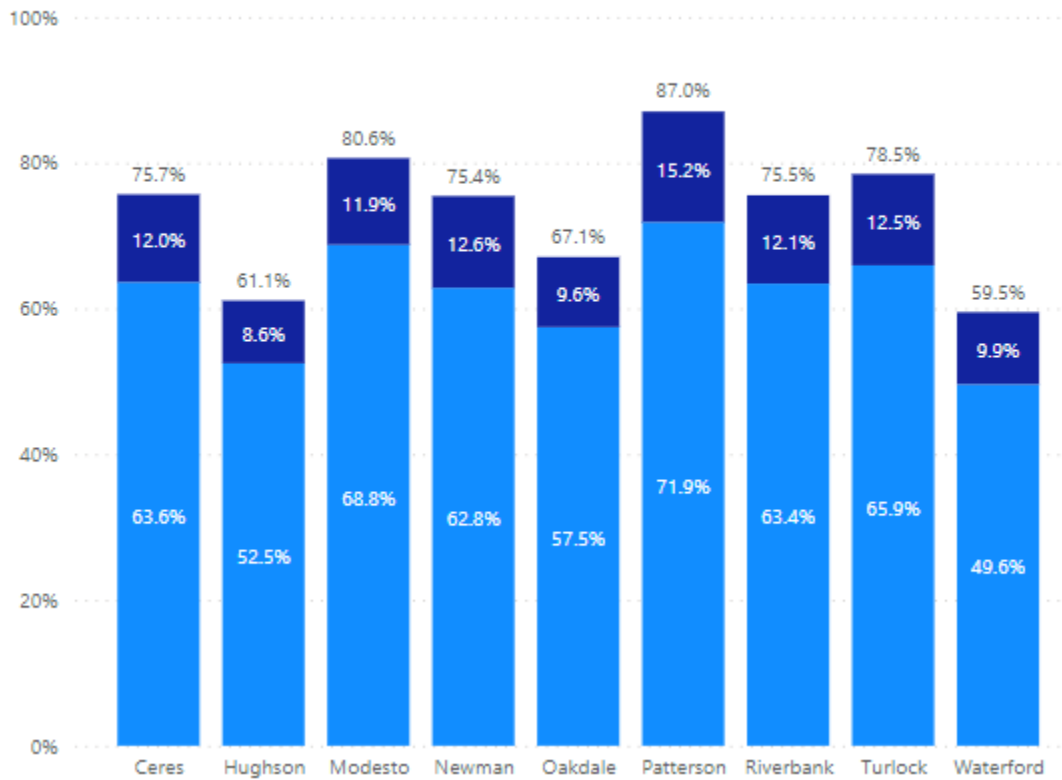
Vaccination Coverage by Age

● % Fully Vaccinated ● % Partially Vaccinated



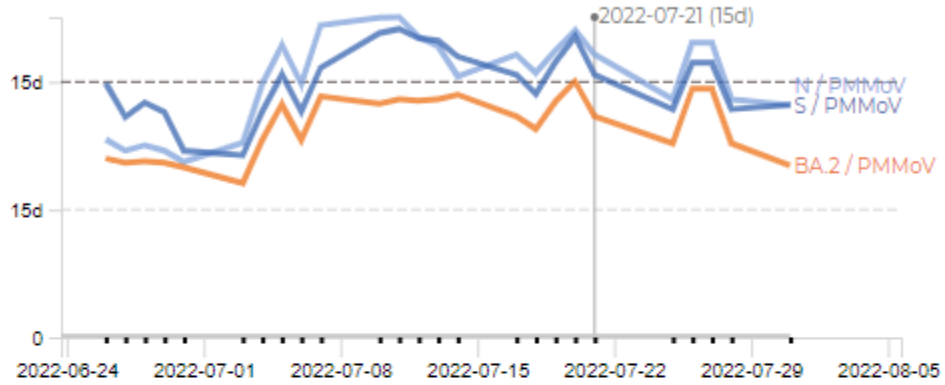
Vaccination Coverage by City

● % Fully Vaccinated ● % Partially Vaccinated

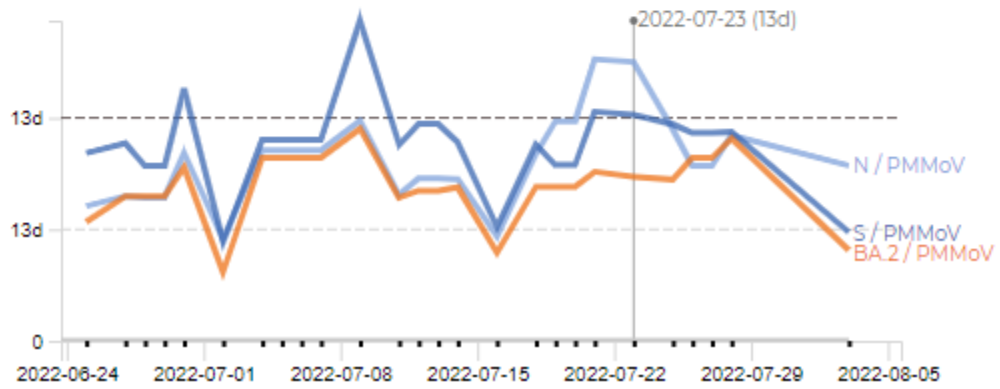


COVID-19 Wastewater Surveillance

Modesto



Turlock



<https://healthycvtogether.org/data/stanislaus-county-wastewater-data/>